

OFFERS IN EXCESS OF

**£265,000**

**Constable Mews**

Bromley, BR1 3BF



## PROPERTY SUMMARY

### \*\*INVESTORS ONLY \*\*

Tenant in situ currently paying £1350 PCM. A stunning one bedroom, one bathroom ground floor apartment in the highly regarded Constable Mews forming part of the old Bromley Police Station. The property has been finished to a high spec, double glazing and fully fitted kitchen with integrated appliances. The property is conveniently located for Bromley Town Centre, whilst rail services are located at Bromley South (0.6 miles) and Bromley North (0.2 miles). This property is offered to the market CHAIN FREE. EPC: C

Leasehold - 110 years  
Service charge - £2,190 p/a  
Ground Rent - £400 p/a  
Council Tax - C

1



1



1





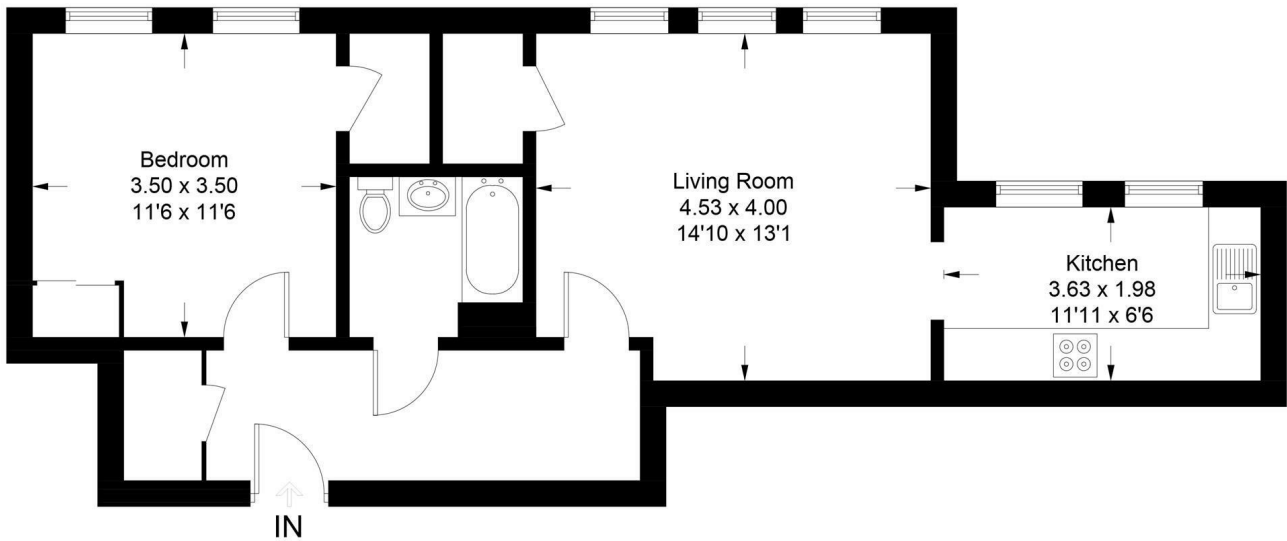




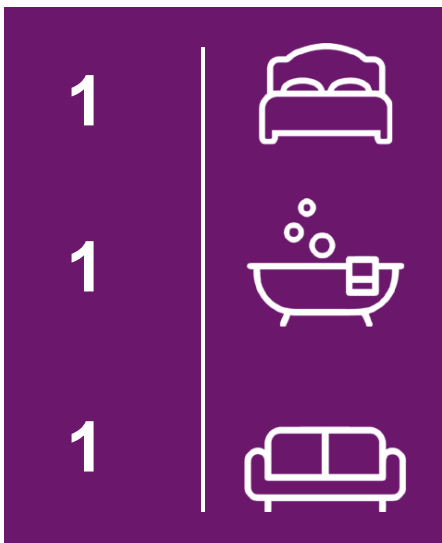


## Constable Mews Bromley, BR1

Approximate Gross Internal Area = 55.4 sq m / 596 sq ft



This plan is for layout guidance only. Not drawn to scale unless stated. Windows and door openings are approximate. Whilst every care is taken in the preparation of this plan, please check all dimensions, shapes and compass bearings before making any decisions reliant upon them. Produced by Planpix on behalf of Sinclair Hammelton (ID859621)



Energy Efficiency Rating		
	Current	Potential
Very energy efficient - lower running costs		
(92 plus) A		
(81-91) B		
(69-80) C	75	78
(55-68) D		
(39-54) E		
(21-38) F		
(1-20) G		
Not energy efficient - higher running costs		
England & Wales		
	EU Directive 2002/91/EC	

**EPC RATING: C COUNCIL TAX BAND: C**

Agents Note: Whilst every care has been taken to prepare these particulars, they are for guidance purposes only. All measurements are approximate and are for general guidance purposes only and whilst every care has been taken to ensure their accuracy, they should not be relied upon and potential buyers/tenants are advised to recheck the measurements

Sinclair  Hammelton

### OFFICE ADDRESS

23 High Street  
Bromley  
Kent  
BR1 1LG

### OFFICE DETAILS

0208 464 5566  
info@sinclairhammelton.co.uk